

# Moxa SoftDVR™ Lite IP Surveillance Software Quick Installation Guide

Fourth Edition, June 2008

[www.moxa.com/product](http://www.moxa.com/product)



© 2008 Moxa Inc., all rights reserved.  
Reproduction without permission is prohibited.

NOTE: This User's Guide contains only simple procedures for installing and operating SoftDVR™ Lite IP Surveillance Software. Refer to SoftDVR™ Pro/Lite IP Surveillance Software User's Manual, which can be downloaded from Moxa's website, for more details

# **Moxa SoftDVR™ Lite IP Surveillance Software Quick Installation Guide**

The software described in this manual is furnished under a license agreement and may be used only in accordance with the terms of that agreement.

## **Copyright Notice**

Copyright © 2008 Moxa Inc.  
All rights reserved.  
Reproduction without permission is prohibited.

## **Trademarks**

MOXA is a registered trademark of Moxa Inc.  
All other trademarks or registered marks in this manual belong to their respective manufacturers.

## **Disclaimer**

Information in this document is subject to change without notice and does not represent a commitment on the part of Moxa.

Moxa provides this document “as is,” without warranty of any kind, either expressed or implied, including, but not limited to, its particular purpose. Moxa reserves the right to make improvements and/or changes to this manual, or to the products and/or the programs described in this manual, at any time.

Information provided in this manual is intended to be accurate and reliable. However, Moxa assumes no responsibility for its use, or for any infringements on the rights of third parties that may result from its use.

This product might include unintentional technical or typographical errors. Changes are periodically made to the information herein to correct such errors, and these changes are incorporated into new editions of the publication.

# Table of Contents

<b>1.</b>	<b>Product Information .....</b>	<b>1-1</b>
	Overview .....	1-1
	SoftDVR™ Lite (Single PC version).....	1-1
	SoftDVR™ Pro (Network version).....	1-1
	Typical Application .....	1-2
	Features .....	1-2
	Administration Management and Video Server Control.....	1-2
	Viewing.....	1-3
	Recording.....	1-3
	Alarm .....	1-3
	System Requirements.....	1-4
	SoftDVR™ Lite .....	1-4
	Release Notes.....	1-4
<b>2.</b>	<b>SoftDVR™ Lite Installation .....</b>	<b>2-1</b>
	Before You Install the Software .....	2-1
	Starting the Installation .....	2-1
	Accessing SoftDVR™ Lite for the First Time .....	2-4
<b>3.</b>	<b>SoftDVR™ Lite General Operation.....</b>	<b>3-1</b>
	Authentication .....	3-1
	Functions.....	3-2
	Function Buttons.....	3-3
	Viewing.....	3-3
	Recording.....	3-3
	Scheduling .....	3-4
	Playback.....	3-4
	Application Settings.....	3-7
	Camera Map.....	3-8
	Repair Database .....	3-8

## Overview

Moxa SoftDVR™ IP Surveillance Software is designed for IP Surveillance systems that use VPort Series video servers as a distributed video networking solution. With the help of Moxa SoftDVR™, system integrators can seamlessly integrate other applications, such as I/O sensors and alarms, with CCTV systems over an IP-based network.

The Moxa SoftDVR™ IP Surveillance Software is available in two versions:

### SoftDVR™ Lite (Single PC version)

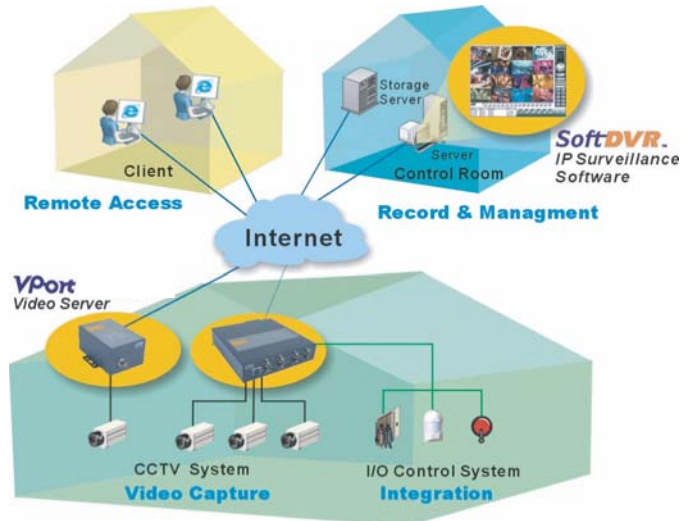
- Up to 4-channel (Quad) IP Surveillance Software with video viewing, recording, camera control, video motion detection, scheduling and user authorization management
- Bundled in the VPort Series Video Servers Software CD free of charge

### SoftDVR™ Pro (Network version)

- Up to 16-channel IP Surveillance Software with complete video management, alarm message management, and system administration
- Sold with the Software CD containing SoftDVR™Pro and User's Manual (Contact your Moxa sales representative to purchase Moxa SoftDVR™Pro IP Surveillance Software)

*NOTE: This User's Guide only contains information for SoftDVR™ Lite. For more details, go to [www.moxa.com/product/video-over-ip\\_products](http://www.moxa.com/product/video-over-ip_products) for a complete product introduction, and to download the SoftDVR™ Pro/Lite IP Surveillance User's Manual.*

## Typical Application



NOTE The Remote Access and I/O Devices Management functions are only provided with SoftDVR™ Pro.

## Features

### Administration Management and Video Server Control

- Supports Moxa VPort Series Video Servers
- Configure camera names, video quality, and video resolution separately
- Supports upgrading VPort's firmware remotely
- Up to 32 users can be added to one system
- User authorization level protection by password
- Supports PTZ camera controls
- Automatically resume viewing and recording after the system reboots
- Easy management of cameras with your own e-map

## Viewing

- Remote Access from client web browser (*only supported by SoftDVR™ Pro*).
- Supports 1, 4, 6, 8, 9, 10, 13, 16 camera viewing formats (*for SoftDVR™ Pro, a maximum of 16 cameras per list; for SoftDVR™ Lite, a maximum of 4 cameras per list*).
- Zoom-in/Zoom-out function for individual cameras when playing back images.
- Viewing and recording by schedule or event trigger for each camera.
- Historic playbacks by time or event.
- Snapshots taken in playback mode to get JPEG images for printing or saving as evidence
- Adjust the contrast, brightness, sharpness, bluriness, and grayscale of the snapshot images.

## Recording

- Images recorded in AVI format—compatible with popular media players
- Choose adjustable FPS MJPEG or MPEG4 video format can be for VPort 2100 series servers  
(*Only supported by SoftDVR Pro. SoftDVR Lite only supports the adjustable FPS MJPEG recording format.*)
- Overridable HD space in FIFO (First-In-First-Out) sequence
- Recorded video files can be stored on a local PC or a Windows-based networked storage server  
(*SoftDVR™ Lite does not support storing on a network hard disk.*)

## Alarm

- Video Motion Detection (VMD) function for each camera.
- Selectable VMD area for each camera (*SoftDVR™ Lite only supports full image VMD*).
- Alarms can be triggered by VMD, video failures, storage full, GPI, and sent by email or GPO, or trigger the PTZ camera to a preset the position (*SoftDVR™ Lite only supports VMD, Video Failure alarm*).
- System status can be reviewed in the system log

## System Requirements

### SoftDVR™ Lite

- MS Windows XP recommended
- Intel Pentium 4 , 2.4 GHz HT (Hyper-Threading) or above
- At least 512 MB of SDRAM
- Nvidia GeForce or ATI TNT2 graphics card with 32 MB display memory or above
- DirectX 9.0 or above

**NOTE** Since the video surveillance system uses a lot of system resource, we strongly recommend that you use a dedicated server to run SoftDVR™ Lite/Pro for video surveillance purposes.

**NOTE** We suggest configuring different multicast groups if multiple VPorts and multicast transmission are used in one SoftDVR system.

## Release Notes

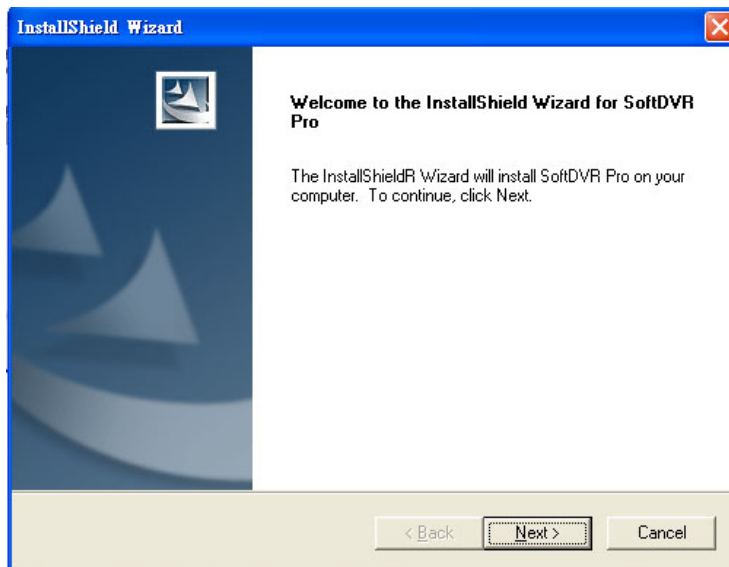
<b>SoftDVR Lite V4.0</b>	
Version	4.0
Date	2007/6/15
File Description	
Release Note: <ol style="list-style-type: none"><li>1. Support VPort 351 series.</li><li>2. Upgrade the system requirement for getting higher video performance in supporting VPort 351.</li></ol>	

## Before You Install the Software

1. Make sure that DirectX 9 or above has been installed on your PC.
2. Run the **SoftDVRLite.exe**, which is included on the VPort Series Software CD. The software can also be downloaded it from Moxa's website.

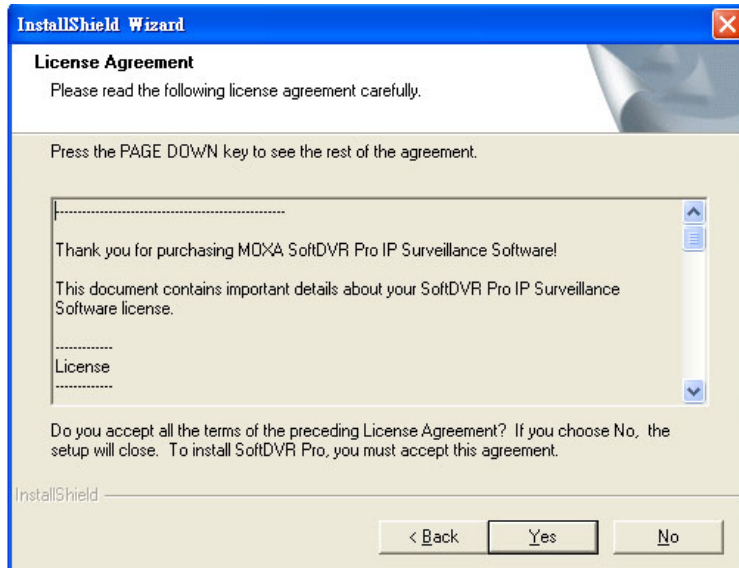
## Starting the Installation

1. The **InstallShield Wizard** will start. Click on **Next** to continue.

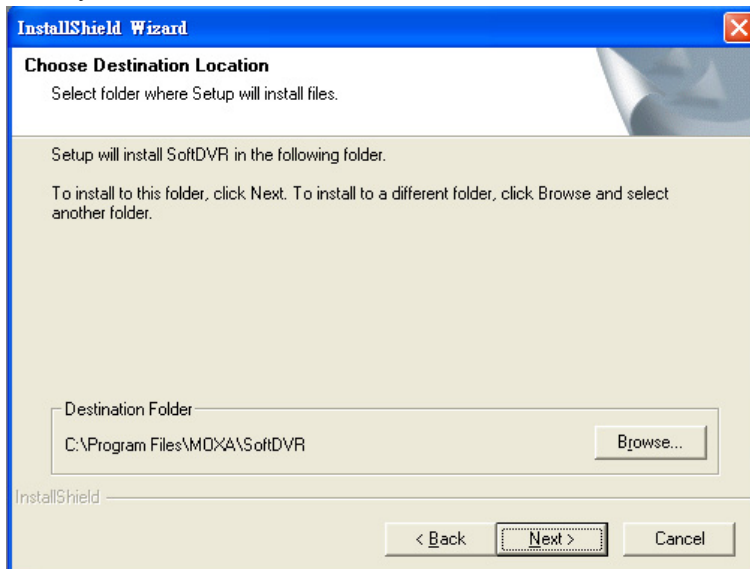




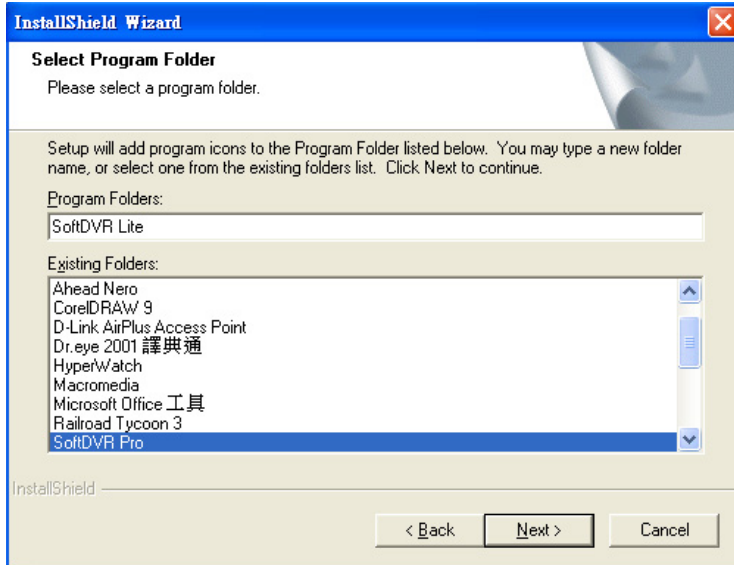
2. The **License Agreement** window will open next. Click on **Yes** to continue.



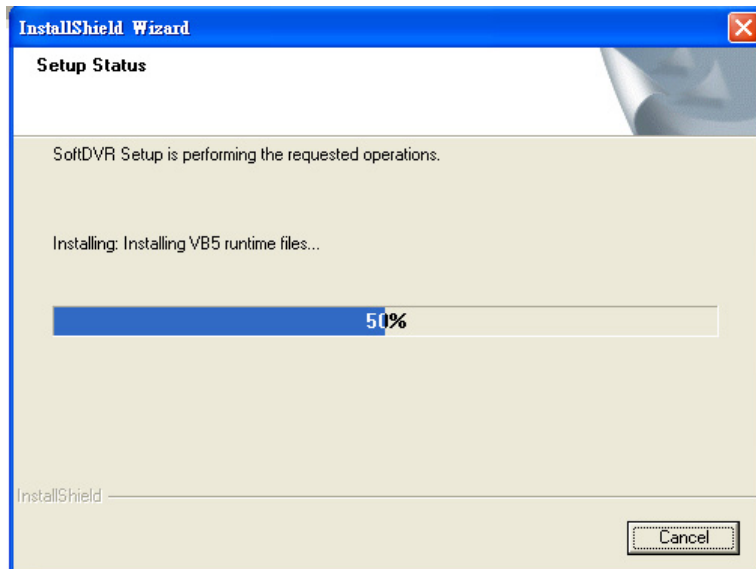
3. The **Choose Destination Location** window will open next. Select the folder in which you would like to install SoftDVR™ Lite to. Click on **Next** to continue..



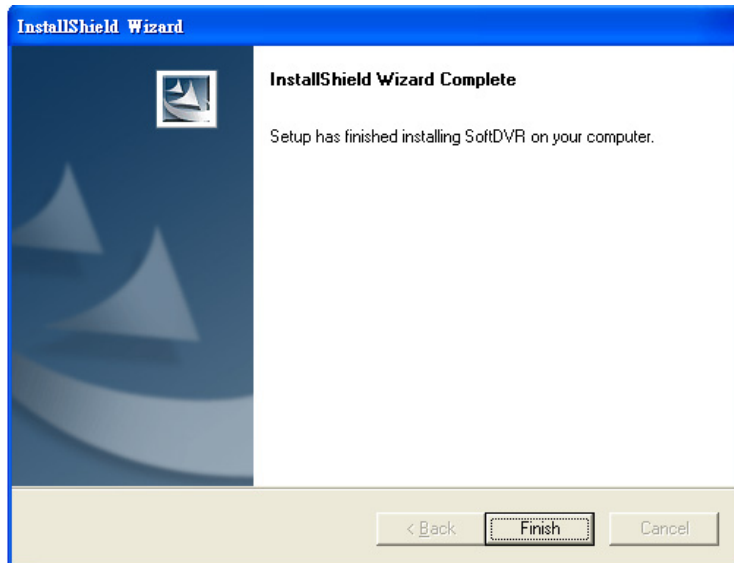
- The **Select Program Folder** window will open next. Select the program folder for which the wizard should create an icon. Click on **Next** to continue.



- The wizard will start the installation process. A digital signature request window will appear during the installation. Click **Yes** to continue the installation.

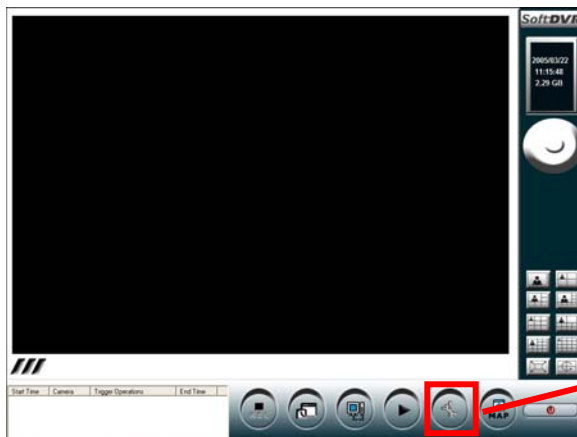


- The **InstallShield Wizard Complete** window will open next. Click **Finish** to complete the installation.



## Accessing SoftDVR™ Lite for the First Time

To launch the SoftDVR Lite program, click on **Start** → **Program Files** → **SoftDVR Lite**. The home page will open with resolution of 800 × 600, and no video image showing. Click the Application Settings button to set up the VPort and cameras.



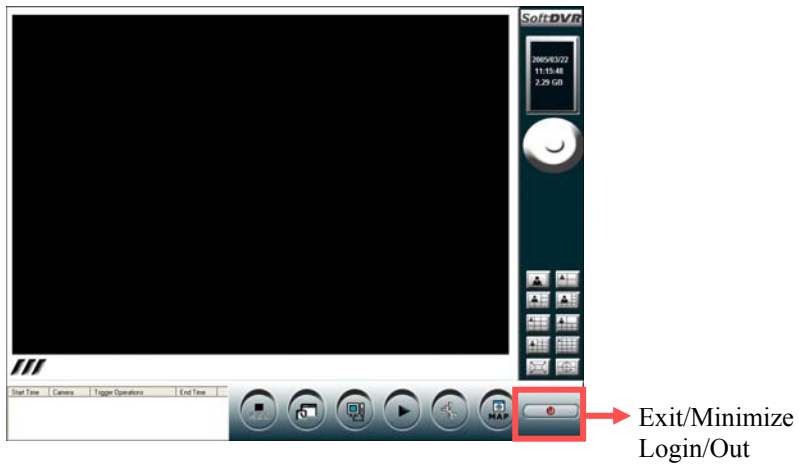
Application Settings

### Authentication

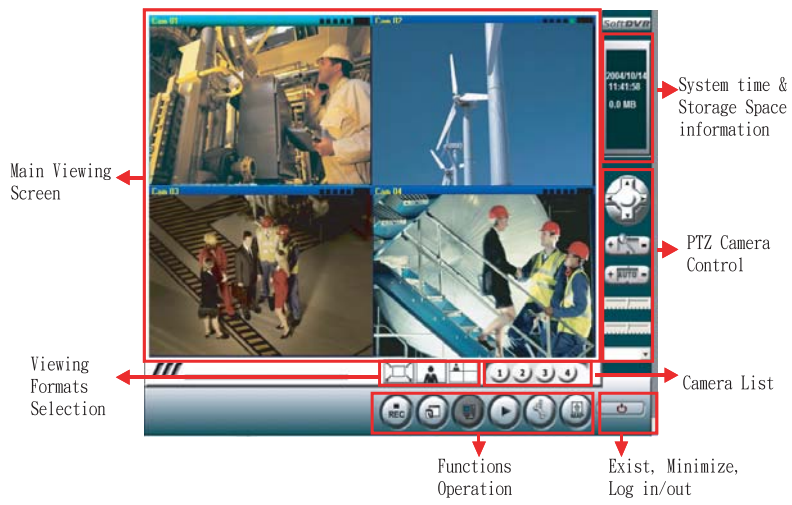
If the software has been configured for **User Management** mode, you will receive an authentication request when accessing SoftDVR™ Lite. For administrators, input the user name as **admin** or **administrator**, and then input the password. Other users should input their own user name and password.



Administrators and users can Logout/Login by clicking the **Exit/Minimize** button located in the bottom right corner of the home page to exit/access SoftDVR™ Lite.



## Functions



## Function Buttons



Recording



Scheduling



Remote Service. (not provided with Lite version)



Playback



Application Settings



Camera Map

## Viewing

SoftDVR™ Lite has 3 viewing formats: (1) 1 channel on the screen, (2) 4 channels on the screen, and (3) view in Full Screen. You can easily change the viewing format with the **Viewing Formats Selection** feature. You can also select the camera you wish to view/control by clicking on one of the buttons in the **Camera List**.

## Recording



To activate the recording function, click the recording button in the **Function Buttons** section. You may activate one of three types of recording on each camera. Different cameras can use different recording type:

1. **Monitor only, not record:** no recording at all time.
2. **Round-the-clock:** recording all the time.
3. **Motion detect:** recording only when VMD is triggered.

In addition, users also can adjust the recording FPS if the video image is MJPEG standard

## Scheduling



To activate the scheduling function, click on the scheduling button in the **Function Buttons** section. Scheduling has the following features:

1. Set up the schedule by **Weekly Schedule** or **Dedicated Schedule**.
2. Action items include recording (remote service is also provided, with the Pro version of the software)
3. Camera selectable
4. Details of the various scheduling tasks are described in the task remarks.
5. An editable scheduling task list is provided.

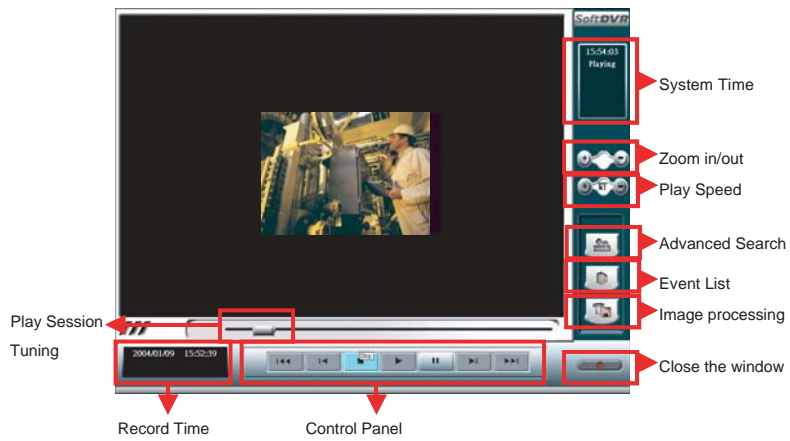
Administrators can schedule tasks on the **Application Setting/Scheduling** page.

**NOTE** A **Scheduling job** also includes recording. For this reason, the **Recording** button, located in **Function Buttons** section on the home page, will be inactive when the **Scheduling** function is active. This is done to avoid conflicts between scheduling tasks and using manual recording and remote service.

## Playback

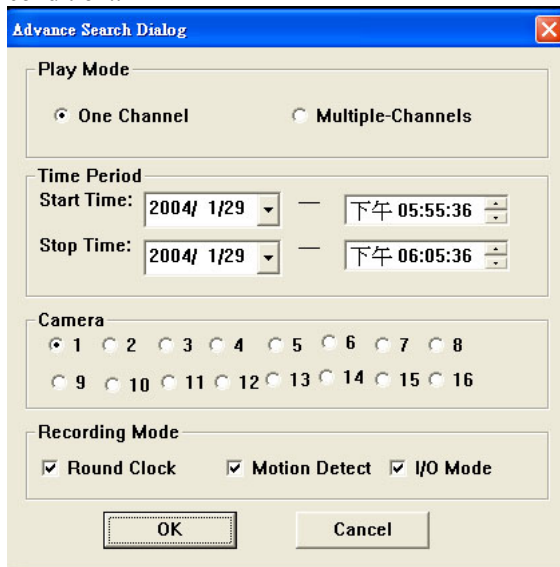


Administrators and authorized users can view the playback of recorded files using the **Playback** function. To activate the **Playback** function, click the **Playback** button, which is located in the **Function Buttons** section. A **Security Playback** window will open next to play back the recorded file.



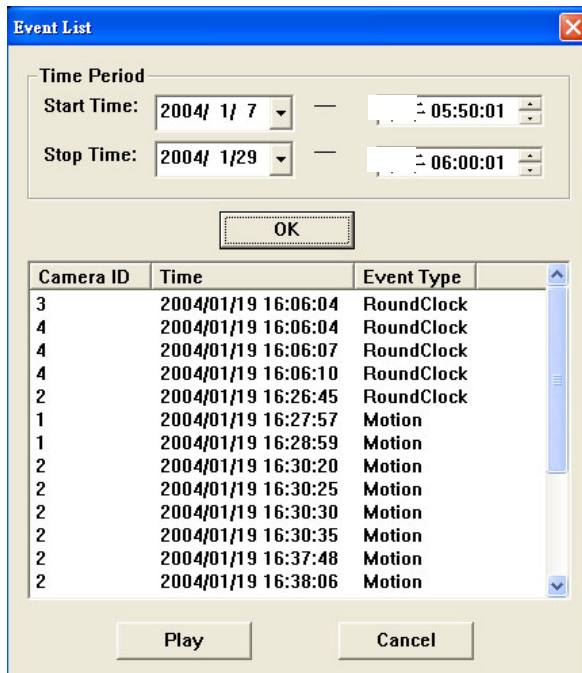
1. **Searching recorded files**

SoftDVR has 2 search modes. **Advanced Search** uses time and camera as the search condition. **Event List** search uses time and event type as the search condition..



← **Advanced Search**





← Event List

**2. Playing a recorded file**

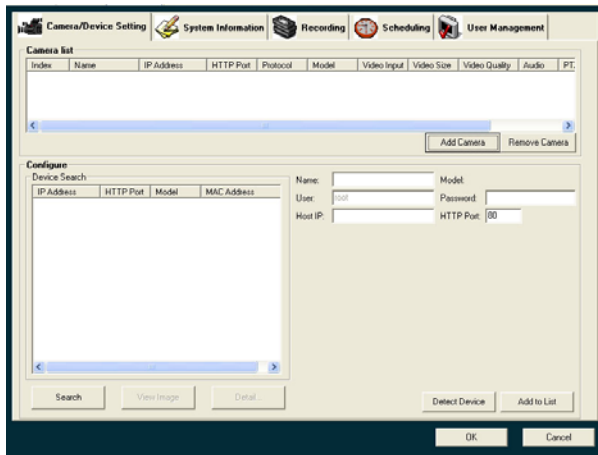
Select the recorded file from the search result and then double click it to play the file on the screen.

**3. Controlling the video play result**

Users can use the Control Panel, Play Session Tuning, Zoom In/Out, and Play Speed functions to control the video play result. In addition, Image Processing can take a snapshot picture of the current image.

**NOTE** To use the **Play Speed** and **Zoom In/Out** functions, users should set up these 2 functions before playing the recorded file. To use the **Control Panel**, **Play Session Tuning**, and **Image Processing** functions, first pause the video play.

## Application Settings



SoftDVR™ Lite has 5 major settings categories.

1. **Camera/Device Setting:** Administrators must configure MOXA VPort Series Video Servers and cameras to acquire video images before using the functions MOXA SoftDVR™ Lite provides. To add a camera, administrators can use the search function to find the VPort, or key in the IP address and root password of VPort manually to get the VPort's information.
2. **System Information:** On this page, administrators can configure the SoftDVR™ Lite server's host name, the start-up status, storage disk locations, safe space of each disk, camera caption, alarm transmitted email addresses, and auto logging settings.
3. **Recording:** There are 2 major settings on the Recording page. One is the recording setting for each camera, including round-the-clock and video motion detection, and the other is VMD settings.
4. **Scheduling:** Administrators can set up the time period in the weekly schedule and dedicated schedule. The job of scheduling is recording action by each camera.
5. **User Management:** The administrator password can be set up on this page. The users list, which can include up to 32 users, can also be configured on this page. Administrators can also configure camera operation and remote service for each user on this page.

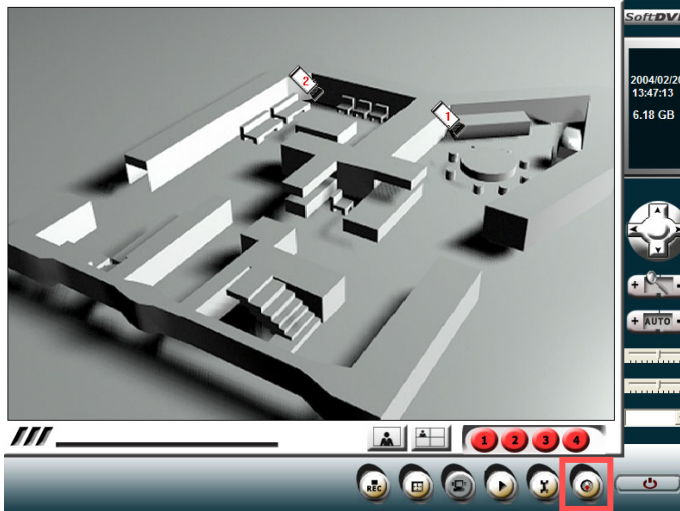
**For more details about Application Settings, refer to the SoftDVR™ Pro/Lite IP Surveillance User's Manual.**

## Camera Map



SoftDVR™ Lite provides a graphics E-map function for camera management. Administrators can import a layout image and place the cameras on the image for easy management on the number of cameras.

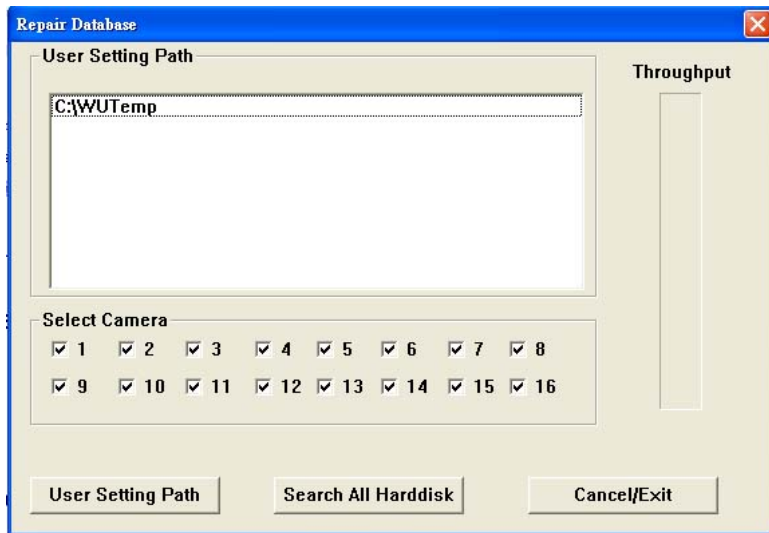
To activate this function, click on the Camera Map button. Administrators can use this function to manage the cameras.



## Repair Database

SoftDVR™ Lite provides a Repair Database function to re-organize the database that stores recorded files. Using the Repair Database function can increase search and playback speed.

1. Select the camera and the hard disk that needs to be repaired.
2. Click on **User Setting Path** to start the repair process.



**NOTE** If a storage path has not been set on the **Application Setting/General Setting** page, the path will not appear in the Repair Database window.